

Long Bay - Okura Great Park Society

Newsletter September 2007



GENERAL MEETING

AND ELECTION CANDIDATE MEETING

Tuesday - 18th September

We encourage all our members to attend the next general meeting of the Society which will update you on our latest activities and the Environment Court status.

We have also invited some candidates of the North Shore elections to attend and present their platforms and position on Long Bay great park.

- Convenor's and Treasurer's Reports
- Fund raising update and actions.
- Other general business.

2nd floor, NSCC Area Office, Glen Road, Browns Bay at 7pm

DAVID GATWARD GROVE PLANTING

The Society and Gatward family have obtained approval from ARC to establish a **David Gatward Memorial Grove** in commemoration of the enormous energy, time, effort and leadership that David put into the vision of a great park at Long Bay.

Please join us to help with the planting.

**Grannies Bay
Sunday 23rd September at 10am**

Bring a spade and gumboots. Access via the beach is possible

CONVENOR'S REPORT

Dear Great Park Supporters, **An Update on the Long Bay Environment Court Case**

Many thanks to all of you who attended the Environment Court to support the Great Park Society in its undertaking to protect the land at Long Bay. I really appreciate the effort that it took to take time out from your busy lives and to make the trek into Auckland. You will be pleased to know that the level of your support was commented on by Judge Jackson.

Unfortunately, the three week period set aside for the case was not long enough to hear the evidence from all of the parties involved. With over 70 witnesses giving evidence it soon became apparent that it was going to prove impossible to fit them all into the three week period. While the Court heard North Shore City Council's and Landco's witnesses, only one of the Auckland Regional Council's witnesses took the stand.

The Court will reconvene for two more weeks commencing 9th October for the other parties to be heard. This will be when the rest of the Auckland Regional Council's witnesses go on the stand, followed by the Great Park Society, the Historic Places Trust, Okura Environment Group, Iwi and others. Judge Jackson has also set aside another week in November, beginning 12th November, just in case.

Some of the most important issues aired at Court were the need for a significant buffer between the Long Bay Regional Park and any development, how to adequately protect the streams and waters of the Marine Reserve, and how much earthworks is acceptable considering the close proximity of the land to the Marine Reserve.

In addition, consideration is being given to the protection of the extensive heritage landscape on the Awaruku headland. This archaeological landscape is located on the ridge directly to the west of Long Bay Beach. The area comprises many Maori archaeological sites layered over each other, dating back to 1450. Overlaid on this is an extensive ditch and bank system, which is an early colonial farming system of fencing. Caroline Philips, archaeologist for Landco, stated in court that she believes that the extent of ditch and bank system at Long Bay is a unique and important example which has not been found anywhere else in New Zealand.

I believe that the court case for Long Bay is advancing well and important progress is being made. Thank you again. Your support spurs us on at this important time.

Warmest Regards,
Fiona McLaughlin

Convener

stories@xtra.co.nz

WINNERS OF SECOND RAFFLE

Congratulations to the winners of the second raffle. Raffle contributions have had a huge benefit to our funding. Many thanks to all.

1st Prize	M Hardern,	Browns Bay	2nd Prize	HJ Chang,	Browns Bay
3rd Prize	J Huszak,	Waiake	4th Prize	S Thompson,	Torbay

FUNDRAISING REPORT

Dear Friends,

Thanks to the hard work and generosity of Society members and other supporters, we have paid all of our Environment Court costs to date. Congratulations and heartfelt thanks to everyone concerned! The tenacity, passion and energy of this charitable community organisation is simply staggering – since May 2006 we have raised over \$215,000 in our determination to protect the Long Bay/Okura hills and Marine Reserve.

Next month, the Great Park Society will finally have the opportunity to take the stand. To this end we need to raise a further \$25,000. It would be tragic to have come this far and not be able to complete the process, due to a lack of funds.

If you are able to make a substantial donation, please leave a message on my answer phone at 479-1748 or contact Jos at 473-6743. Alternatively, you could post a cheque to LBOGPS, PO BOX 35348, Browns Bay, Auckland. To make an instant automatic \$10 donation phone 0900 4 PARK (0900 4 7275). With the court case reconvening in just 4 weeks, we need your immediate support. Thank you so much in anticipation of your ongoing sacrifice to this campaign – together we are shaping history.

Warmest Regards,

Linda Nunn.

Fundraising Coordinator

Ph: (09) 479 1748 linda.paul@actrix.co.nz

PS: I look forward to seeing you at the two fundraising movies advertised in this newsletter.

2007 SUBSCRIPTION RENEWALS

Thank you to those who have paid their membership so promptly. Please find your receipt enclosed. (If your fees were paid in the last 7 days your receipt will follow in the next newsletter).

Please call **Beth** on 473 5097 for any queries. The * on your label means your sub is still due.

**2007 SUBSCRIPTION RENEWAL
AND MEMBERSHIP FORM**

**LONG BAY - OKURA GREAT PARK SOCIETY
PO BOX 35 348, BROWNS BAY**

Mr, Mrs, Ms _____ First Name(s) _____

Address: _____

Suburb: _____ Phone: _____ Mob: _____

E-mail: _____ Fax: _____

ANNUAL SUBSCRIPTION 2007: \$10 per member x () \$ _____

DONATION: \$ _____

TOTAL \$ _____

Please mail to above address enclosing payment. We will forward a receipt with your next newsletter.

If you have already paid please pass this on to a friend.

LBOGP FUNDRAISING MOVIES



In the summer of 1935, 13-year-old Briony Tallis observes a flirtation between a servant's son, Robbie, and her older sister, Cecilia, that she childishly misconstrues. Briony's misunderstanding leads to a terrible crime whose consequences follow them through World War II.

Starring :

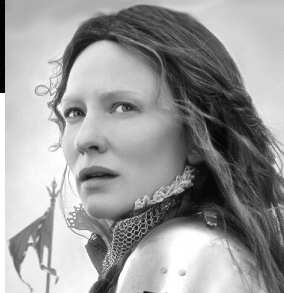
Keira Knightley,
James McAvoy,
Romola Garai,
Vanessa Redgrave,
Brenda Blethyn

Sunday 28th October at 6pm
Bridgeway Cinema, Queen Street, Northcote

Phone Jennifer on 473-6847 to get your tickets. \$15 per ticket

ELIZABETH THE GOLDEN AGE

The story finds Queen Elizabeth I (Blanchett) facing bloodlust for her throne and familial betrayal. Aware of the changing religious and political tides of late 16th century Europe, Elizabeth finds her rule openly challenged by the Spanish King Philip II (Jordi Molla) who is determined to restore England to Catholicism.



Sunday 2nd December

MEET THE ELECTION CANDIDATES

WHO SHOULD YOU VOTE FOR TO PROTECT LONG BAY ?

The Great Park Society would like to invite you to a

SPECIAL ELECTION MEETING

7pm, Tuesday 18th September

2nd floor, North Shore City Council Area Office

Glen Road, Browns Bay

FIND OUT WHAT YOUR FUTURE COUNCILLORS REALLY THINK ABOUT LONG BAY !!

The results of our candidate survey will be on-line
at www.longbaypark.org after this meeting

Convenor	<i>Fiona McLaughlin (09-473-3779)</i>
Deputy Convenor	<i>Bernard Stanley (09-473-8630)</i>
Secretary	<i>Chris MacDonald (09-473-8004)</i>
Treasurer	<i>Barry Tripp</i>

Long Bay - Okura Great Park Society: P.O. Box 35-348 Browns Bay
www.longbaypark.org

If undelivered please return to
PO Box 35 348 Browns Bay

New Zealand
Permit No. 107760

